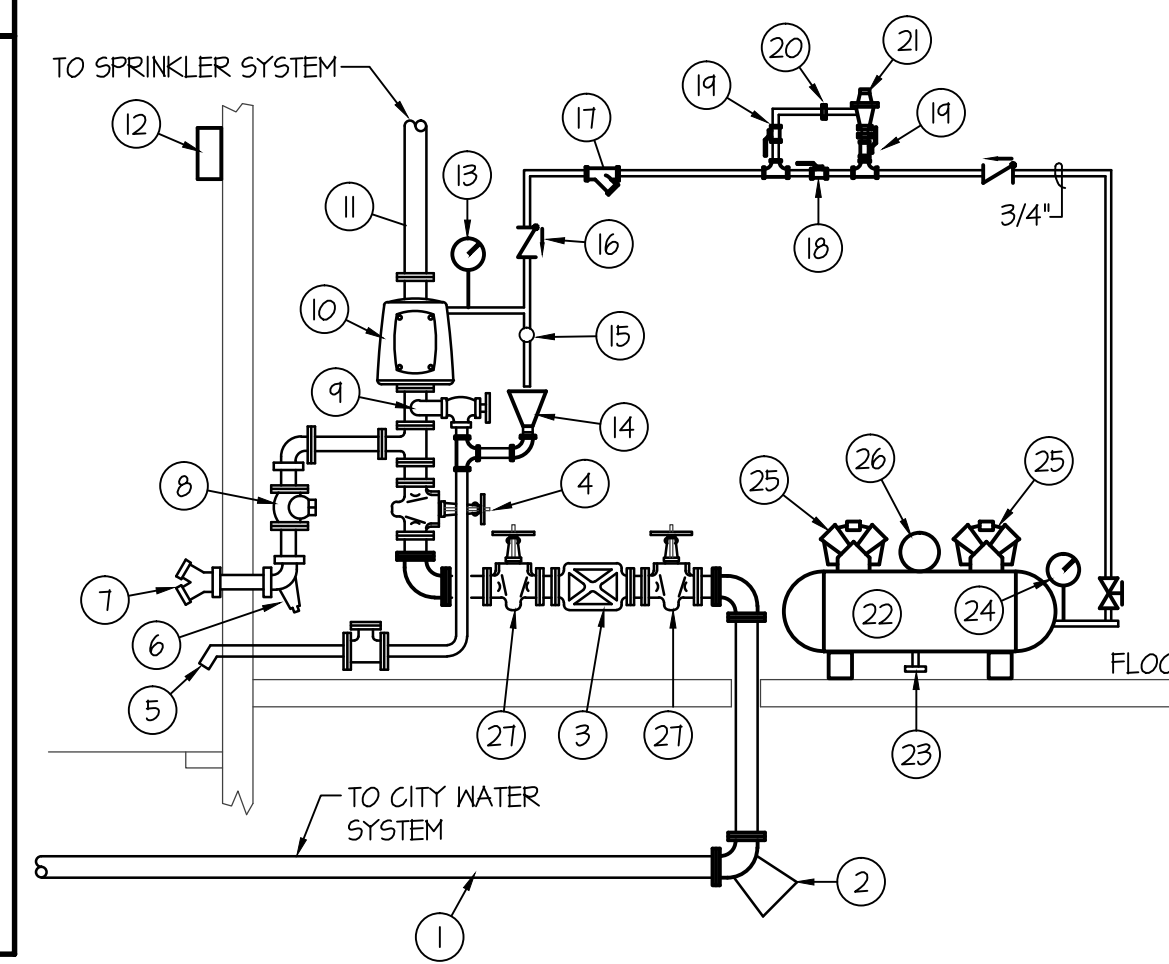


ITEM	DESCRIPTION
1	4" WATER SERVICE TO BLDG
2	CONCRETE THRUST BLOCK
3	REDUCED PRESS. BACKFLOW PREVENTER
4	O.S. & Y. VALVE
5	MAIN DRAIN
6	BALL DRIP
7	SIAMSE FIRE DEPT. CONNECTION
8	CHECK VALVE
9	MAIN DRAIN VALVE
10	DRY PIPE VALVE
11	FIRE WATER MAIN TO SPRINKLERS
12	ELECTRIC ALARM BELL
13	GAUGE
14	DRAIN CUP
15	PRESSURE SWITCH (HIDDEN)
16	CHECK VALVE (SOFT SEAT)
17	STRAINER
18	BYPASS VALVE (NORMALLY CLOSED)
19	SHUT-OFF VALVE
20	UNION
21	AIR MAINTENANCE DEVICE
22	AIR COMPRESSOR
23	DRAIN VALVE
24	SHUT OFF & PRESSURE GAUGE FURNISHED W/ COMPRESSOR
25	COMPRESSOR
26	MOTOR
27	SHUT-OFF VALVES WITH TAMPER SWITCHES

ALL PIPING THIS DETAIL TO BE INSTALLED BY FIRE SPRINKLER CONTRACTOR UNLESS NOTED.



DRY SYSTEM FIRE RISER DETAIL

NO SCALE

FIXTURE SCHEDULE					
SYM.	DESCRIPTION	HOT	COLD	WASTE	VENT
DF-1	BIL-LEVEL DRINKING FOUNTAIN - ELKAY MODEL EZ-5TL8WSLK WITH EZH2O BOTTLE FILLER FLEXI-GUARD BUBBLERS, 1/2" STOP AND 1-1/2" P-TRAP. PROVIDE ALL INTERCONNECTING PIPING AND DRAIN.	---	1/2"	1-1/2"	1-1/2"
DF-2	SINGLE DRINKING FOUNTAIN - ELKAY MODEL LZ50WELP WITH EZH2O BOTTLE FILLER FLEXI-GUARD BUBBLER, 1/2" STOP AND 1-1/2" P-TRAP. PROVIDE ALL INTERCONNECTING PIPING AND DRAIN.	---	1/2"	1-1/2"	1-1/2"
DN-1	DISHWASHER - TO BE PROVIDED BY THE OWNER AND PLUMBING CONTR. TO ROUGH-IN AND CONNECT TO 1/2" HW LINE UNDER SINK AND CONNECT 3/4" PUMPED WASTE LINE TO SINK SIDE OF P-TRAP USING DISHWASHER CONNECTION.	1/2"	---	3/4"	---
FD-1	2" FLOOR DRAIN WITH PRIMER - ZURN Z-415B WITH 5"φ NICKEL-BRONZE STRAINER AND 2" DEEP SEAL P-TRAP WITH ZURN I022 TRAP PRIMER LOCATED IN PLUMBING CHASE.	---	---	2"	2"
FD-2	2" FLOOR DRAIN - ZURN Z-415B WITH 5"φ NICKEL-BRONZE STRAINER AND 2" DEEP SEAL P-TRAP	---	---	2"	2"
FS-1	FLOOR SINK - ZURN Z-1900-KG WITH WHITE ENAMEL FINISH, DOME STRAINER & 4" DEEP SEAL P-TRAP. PROVIDE 3/4 GRATE OVER SINK.	---	---	4"	2"
HB-1	EXTERIOR HOSE BIBB - ZURN MODEL Z-1310 "ECOLOTROL" WITH REMOVABLE KEY. LENGTH TO SUIT WALL THICKNESS.	--	3/4"	---	---
JS-1	FLOOR MOUNTED SERVICE SINK - KOHLER K-6710 "WHITBY" W/ K-8440 WIRE RIM GUARD, K-8428 FAUCET ASSEMBLY & K-4142 STRAINER & DEEP SEAL P-TRAP. HOSE & HOSE GLAMP	1/2"	1/2"	2"	2"
L-1	ADA COUNTERTOP LAVATORY - KOHLER MODEL K-2405-4 SELF-RIMMING "FARMINGTON" WITH MOEN L4601 LEVER FAUCET, K-T115 OPEN GRID STRAINER, 1/2" BALL STOPS AND 1-1/4" P-TRAP. INSULATE HOT WATER SUPPLY AND TRAP WITH JACKET.	1/2"	1/2"	1-1/2"	1-1/2"
L-2	COUNTERTOP LAVATORY - KOHLER MODEL K-2405-4 SELF-RIMMING "FARMINGTON" WITH MOEN L4601 LEVER FAUCET, K-T115 OPEN GRID STRAINER, 1/2" BALL STOPS AND 1-1/4" P-TRAP.	1/2"	1/2"	1-1/2"	1-1/2"
RB-1	REFRIGERATOR SUPPLY BOX - GUY GRAY MODEL B1B675 W/ 1/2" x 1/4" SHUT OFF VALVE	---	1/2"	---	---
S-1	DOUBLE COMPARTMENT SINK WITH GOOSENECK FAUCET - ELKAY MODEL LR-3319 WITH 18 GA TYPE 304 STAINLESS STEEL CONSTRUCTION, 3-HOLE FAUCET DRILLINGS, LK-4100 LEVER HANDLE FAUCET, (2) LK-99 STRAINERS, 1-1/2" P-TRAP AND 1/2" BALL TYPE STOP VALVES.	1/2"	1/2"	2"	2"
U-1	ADA WALL MOUNTED URINAL - KOHLER K-4484-T "FRESHMAN" WITH WALL CARRIER & SLOAN REGAL BATTERY FLUSH VALVE. MOUNT AT ADA LEVEL.	---	3/4"	2"	2"
WB-1	WASHING MACHINE HOOK-UP - GUY GRAY MODEL BB2007S COMBINATION BOX COMPLETE WITH 2" WASTE LINE AND P-TRAP, 1/2" HOT & COLD WATER LINES FROM TOP	1/2"	1/2"	2"	2"
WC-1	ADA WALL MOUNTED FLUSH VALVE WATER CLOSET - KOHLER K-4325-0 "KINGSTON" WITH ELONGATED BOWL, K-4670C WHITE OPEN FRONT SEAT, SLOAN REGAL BATTERY FLUSH VALVE AND CHINA BOLT CAPS. MOUNT AT ADA HEIGHT.	---	1"	4"	2"
WC-2	WALL MOUNTED FLUSH VALVE WATER CLOSET - KOHLER K-4325-0 "KINGSTON" WITH ELONGATED BOWL, K-4670C WHITE OPEN FRONT SEAT, SLOAN REGAL BATTERY FLUSH VALVE AND CHINA BOLT CAPS.	---	1"	4"	2"
WH-1	GAS WATER HEATER- A.O. SMITH MODEL GPD40L 40 GALLON GAS WATER HEATER WITH 40,000 BTU INPUT, AMTROL ST-5 EXPANSION TANK, T&P VALVE. PROVIDE POWERS 3/4" LM-491-10 MIXING VALVE. 3"φ FLUES TO VENT TERMINATION ON ROOF. SEE DETAIL ON SHEET P200	3/4"	3/4"	---	---
WH-2	ELECTRIC WATER HEATER- A.O. SMITH MODEL EMT-6 6 GALLON WATER HEATER, 120/60/1 POWER AT 12 AMPS (1440 WATTS TOTAL) WITH T&P RELIEF VALVE AND POWER CORD. PIPE T&P VALVE TO SINK SIDE OF P-TRAP ON ADJACENT SINK USING DISHWASHER CONNECTION.	1/2"	1/2"	---	---
WS-1	WATER SOFTENER- WATER TECH RS1403-245204 WITH 2" VALVE ASSEMBLY. SOFTENER TO PROVIDE 54 GPM PEAK FLOW, 34 GPM CONTINUOUS FLOW AT 90,000 GRAINS. SEE SPECIFICATIONS FOR OTHER APPROVED MANUFACTURERS.	---	2"	---	---



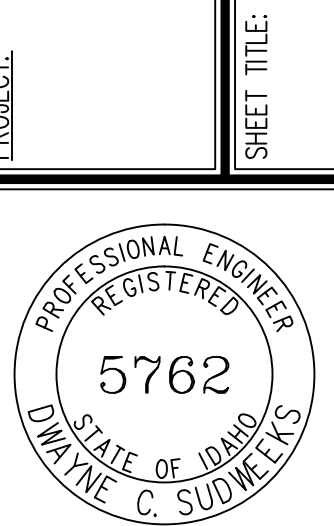
Engineered Systems Associates
Mechanical Engineers

Dwayne Sudweeks
1355 East Center - Pocatello, Idaho 83201
Phone: (208) 233-0501 Fax: (208) 233-0529 email: esa@engsystems.com

A NEW COMMUNITY CENTER FOR:
BYU-IDAHO VILLAGE APTS.
REXBURG, IDAHO

PLUMBING DETAILS & SCHEDULES

PROJECT:



DRWN. BY:	DCS
OKD. BY:	DCS
JOB NO.	DATE:
18084	MAY 2014

ORIGINAL DRAWING SIGNED BY: DWAYNE C. SUDWEKS
DATE ORIGINAL SIGNED: MAY 04, 2014
ORIGINAL ON FILE AT ENGINEERED SYSTEMS ASSOCIATES
1355 EAST CENTER, POCATELLO, IDAHO 83201

SHEET:
P201
OF: THREE